



*Actiontec*<sup>®</sup>  
DSL MODEM  
quick start guide

*This Quick Start Guide will walk you through the easy steps to set up your new DSL Modem.*

You will need the following items from your Quick Start Kit:

- DSL Modem
- Black Power Cord
- Black or Grey DSL Cable
- Yellow Cable

## CONTENTS

|                             |   |
|-----------------------------|---|
| connecting the modem.....   | 4 |
| configuring the modem ..... | 6 |

for additional assistance please call  
**503.632.HELP**  
4357

### STEP 1

Get the **DSL Modem** and **Power Cord** from your Quick Start Kit.



NOTE: YOUR POWER CORD MAY LOOK DIFFERENT.

### STEP 2

Plug the smaller end of the **Power Cord** into the **Black Port** on the back of the modem.



### STEP 3

Plug the larger end of the **Power Cord** into a **Power Outlet**.

### STEP 4

Make sure the **Power Light** on the modem is SOLID **Green**.



NOTE: THE DSL LIGHT MAY BLINK.

### STEP 5

Get the **Yellow Cable** and plug one end of it into the **Yellow Port** on the back of the Modem.



### STEP 5

Make sure the computer is turned on. Plug the other end of the **Yellow Cable** into the **Ethernet Port** on the back of the computer.

An **Ethernet Port** looks similar to a regular phone jack, is slightly larger.



### STEP 6

Make sure the **Ethernet light** on the modem is **Green**. This may take a few



NOTE: IF THE ETHERNET LIGHT DOES **NOT** TURN GREEN, MAKE SURE THE YELLOW CABLE IS PROPERLY CONNECTED ON BOTH ENDS.

### STEP 7

Get the **Black or Gray DSL Cable** from your Quick Start Guide. Plug one end into the **Gray Port** located on the back of the modem. Plug the other end into the **Phone Jack** closest to your computer.



NOTE: MAKE SURE ALL DEVICES WITH THE SAME PHONE NUMBERS AS YOUR DSL LINE HAVE FILTERS.

### STEP 8

Make sure that the **Power** and **DSL Lights** are a solid **Green**. This may take a few moments. This may take up to 30 seconds.

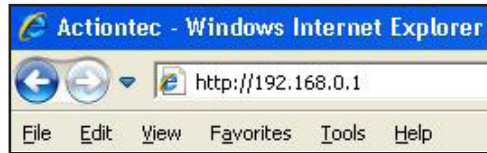


**PLEASE NOTE:** Modems are pre-configured. These steps are only necessary if you need to edit your wireless settings.

## STEP 1

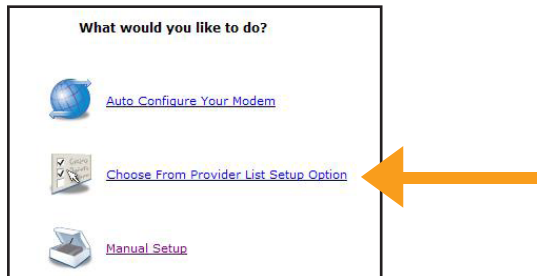
Login to the modem by going to <http://192.168.0.1>

Username: admin  
admin pass: admin



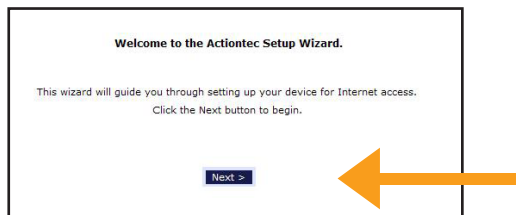
## STEP 2

Click "Choose from provider list setup option"



## STEP 3

On the following screen click "Next"



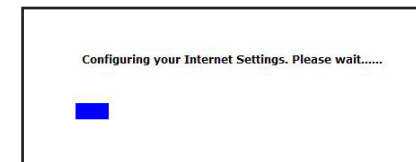
## STEP 4

Choose "AT&T (SBC) (1483 Bridged LLC 0,35)" from the list and click "Next"



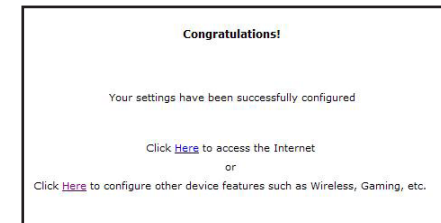
## STEP 5

Wait until the "configuring your internet settings" window completes



## STEP 6

You should be at the Congratulations screen. Click the "Click here to access the internet" link



## STEP 7

If everything is working right, you should be taken to <http://www.actiontec.com/congratulations>

## CONTACT US

### business office

15223 S Henrici Rd  
Oregon City, OR 97045

503 632-3113

### online

[www.bctelco.com](http://www.bctelco.com)

### services

Telephone  
Broadband/DSL  
Cable TV  
Wireless  
Advertising

